



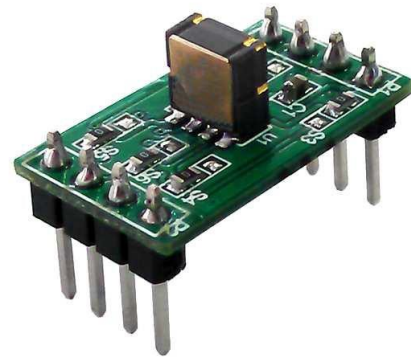
# MXP7205VW-B Prototyping Board

## MXP7205VW-B

### GENERAL DESCRIPTION

The MXP7205VW-B provides a convenient and easy way to evaluate and prototype with the MXP7205VW dual axes accelerometer. The accelerometer and passive components are SMT mounted on the board. Each pin of the MXP7205VW SMT device is brought out to standard 0.10 inch on center connections on the sides of the prototyping board. Wires can either be soldered directly to the prototyping board or the DIP pins can be used with widely available breadboard kits.

For complete performance specifications of the MXP7205VW refer to the MXP7205VW datasheet.

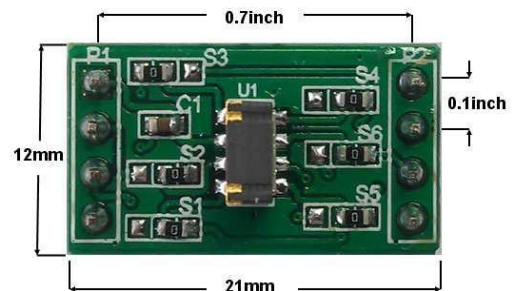


MXP7205VW-B

### PIN DESCRIPTION

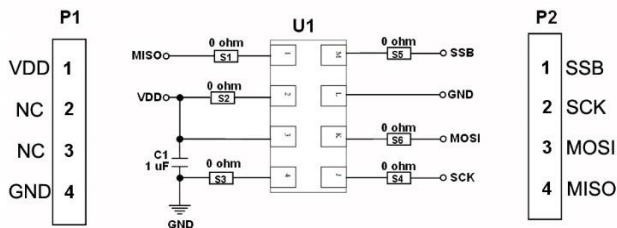
Pin	Name	Description
P1-1	VDD	Supply Voltage 4.5 to 5.25 V
P1-2	NC	No Connect
P1-3	NC	No Connect
P1-4	GND	Ground
P2-1	SSB	Slave Select Bar (active low)
P2-2	SCK	Clock Input
P2-3	MOSI	Master Out – Slave In
P2-4	MISO	Master In – Slave Out

### PCB CONNECTION DIMENSIONS



MXP7205VW-B

### SCHEMATIC OF THE MXP7205VW-B



MXP7205VW-B

Information furnished by MEMSIC is believed to be accurate and reliable. However, no responsibility is assumed by MEMSIC for its use, nor for any infringements of patents or other rights of third parties, which may result from its use. No license is granted by implication or otherwise under any patent or patent rights of MEMSIC.

**MEMSIC, Inc.**  
 One Technology Drive, Suite 325, Andover, MA, 01810, USA  
 Tel: +1 978 738 0900 Fax: +1 978 738 0196  
 www.memsic.com