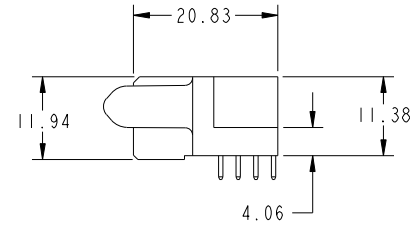
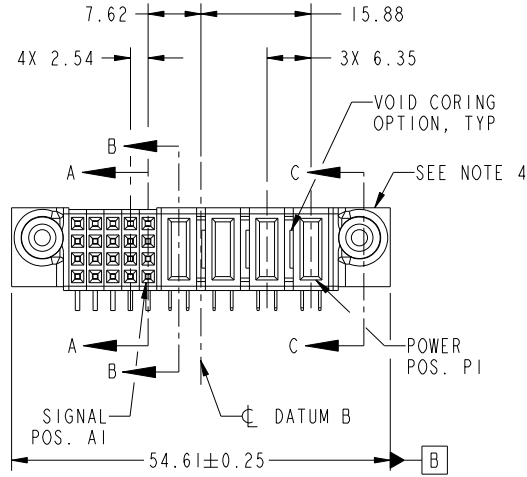


Tous droits strictement reserves. Reproduction ou communication a des tiers interdite sous quelque forme que ce soit sans autorisation écrite du propriétaire. Propriete de c FCI. Droits de reproduction FCI.



All rights strictly reserved. Reproduction or issue to third parties in any form whatever is not permitted without written authority from the proprietor. Property of FCI. Copyright FCI.

PRODUCT NO.	ROWS	SIGNAL					POWER																	
		E2	5	4	3	2	1	P4	P3	P2	P1	E1												
51772-012-- NOTE ③	D C B A		H	H	H	H	H	H	G	G	G	G	F	F	F	F	F	F	E	E	E	E	E	E



CODE	DIM "M" MATING LENGTH	CONTACT TYPE
PA	[1.07]	POWER
H	[N/A]	SIGNAL
G	[N/A]	SIGNAL
F	[N/A]	SIGNAL
E	[N/A]	SIGNAL

mat'l code				SEE NOTE	tolerances unless otherwise specified		CUSTOMER		
ltr	ecn no.	dr	date	linear	0.X ± 0.3	projection	COPY		
A	DG09-0139	WD	05/06/09	angles	0.XX ± 0.13		title		
					0.XXX ± 0.051	MIM	4P + 20S R/A STB RECEPTACLE		
				dr	0° ± 2°	scale	product family	PwrBlade	code
				enr	Warren Du 04/28/09	1:1	size	A	213
				chr	Warren Du 04/28/09		dwg no	51772-012	sheet
				appd	PM ZHENG 04/28/09				1 of 4
					JOSEPH HSIA 04/28/09				
sheet index	revision sheet	A	A	A	A				
		1	2	3	4				

cage code 22526

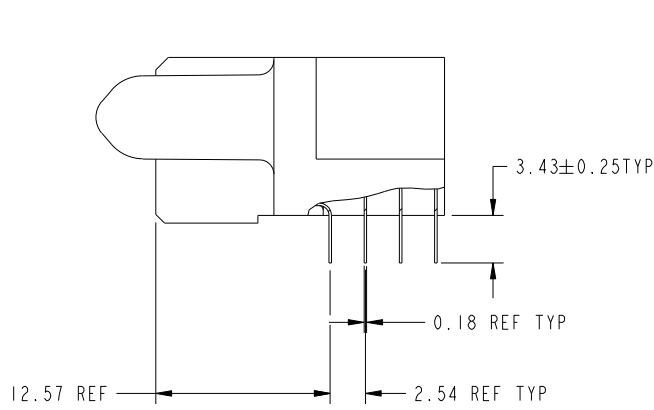
Pro/E

Tous droits strictement reserves. Reproduction ou communication a des tiers interdite sous quelque forme que ce soit sans autorisation écrite du propriétaire. Propriete de c FCI. Droits de reproduction FCI.

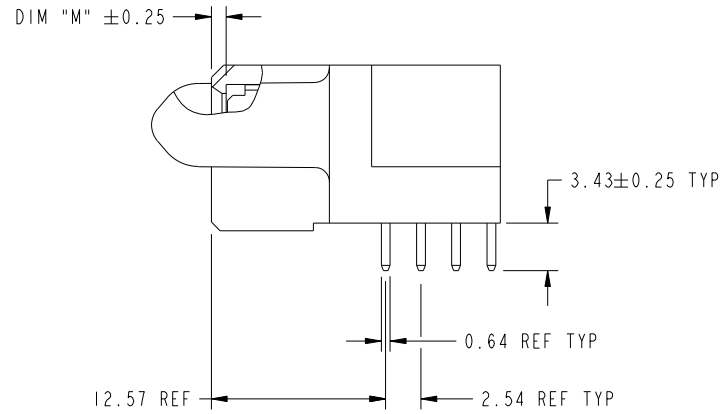
All rights strictly reserved. Reproduction or issue to third parties in any form whatever is not permitted without written authority from the proprietor. Property of FCI. Copyright FCI.



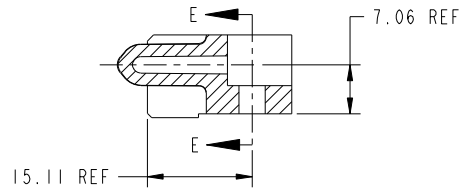
PRODUCT NUMBER
51772-012--
NOTE: 3



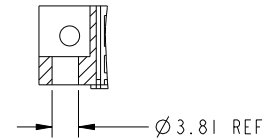
BROKEN-OUT SECTION A-A
SCALE 2:1



BROKEN-OUT SECTION B-B
SCALE 2:1



SECTION C-C



PARTIAL SECTION E-E

mat'l code				SEE NOTE		tolerances unless otherwise specified		CUSTOMER		 www.fciconnect.com			
ltr	ecn no.	dr	date	linear	0.X ± 0.3		COPY		 title 4P + 20S R/A STB RECEPTACLE	product family		code	
A					0.XX ± 0.13		 MIM			size	PwrBlade		213
					0.XXX ± 0.051		scale			dwg no	51772-012		sheet
				angles	0 ± 2°		1:1		A			2 of 4	
				dr	Warren Du	04/28/09							
				engr	Warren Du	04/28/09							
				chr	PM ZHENG	04/28/09							
				appd	JOSEPH HSIA	04/28/09							
sheet index	revision sheet												

cage code 22526

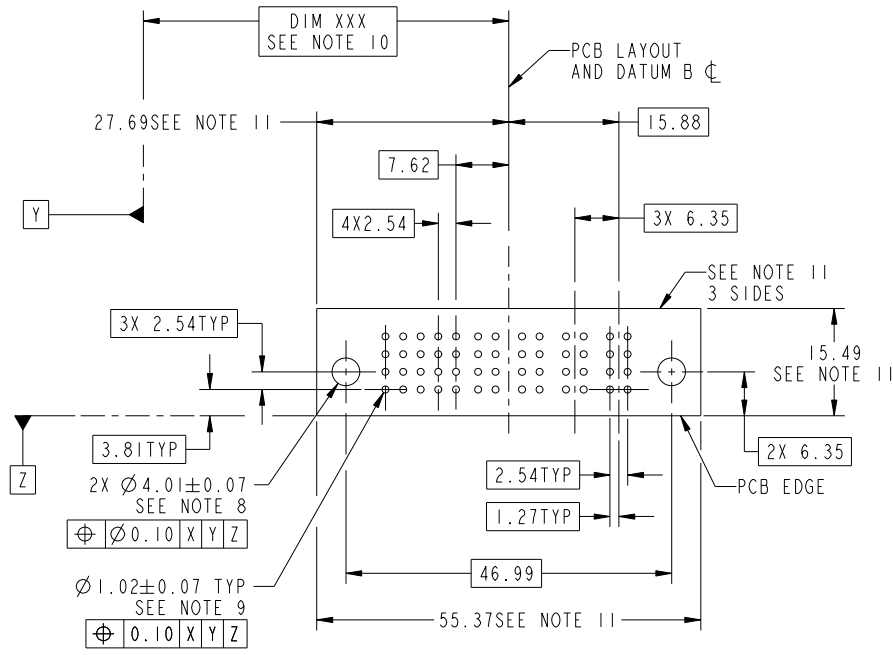
Pro/E

Tous droits strictement reserves. Reproduction ou communication a des tiers interdite sous quelque forme que ce soit sans autorisation ecrite du proprietaire. Propriete de c FCI. Droits de reproduction FCI.

All rights strictly reserved. Reproduction or issue to third parties in any form whatever is not permitted without written authority from the proprietor. Property of FCI. Copyright FCI.



PRODUCT NUMBER
51772-012--
NOTE: 3



RECOMMENDED PCB LAYOUT

mat'l code		SEE NOTE		tolerances unless otherwise specified		CUSTOMER		FCI	
ltr	ecn no.	dr	date	linear	0.X ±0.3	COPY		www.fciconnect.com	
A					0.XX ±0.13	projection		title	
				angles	0.XXX ±0.051			4P + 20S R/A STB RECEPTACLE	
				dr	0° ±2°	MIM		product family	
				enr	Warren Du 04/28/09			PwrBlade	
				chr	Warren Du 04/28/09	scale		code	
				appd	PM ZHENG 04/28/09	1:1		213	
					JOSEPH HSIA 04/28/09	A		sheet	
sheet index	revision sheet							3 of 4	
								3 of 4	

cage code 22526

Pro/E

Tous droits strictement reserves. Reproduction ou communication a des tiers interdite sous quelque forme que ce soit sans autorisation écrite du propriétaire. Propriete de c FCI. Droits de reproduction FCI.



All rights strictly reserved. Reproduction or issue to third parties in any form whatever is not permitted without written authority from the proprietor. Property of FCI. Copyright FCI.

PRODUCT NUMBER
51772-012--
NOTE: 3

NOTES:

1. DIMENSIONS AND TOLERANCES ARE IN ACCORDANCE WITH ASME Y14.5M, 1994 UNLESS OTHERWISE SPECIFIED.

CONNECTOR NOTES:

- ② HOUSING MATERIAL: UL 94 V-0 GLASS FILLED HIGH-TEMP THERMOPLASTIC
POWER CONTACT MATERIAL: COPPER ALLOY
SIGNAL PIN MATERIAL: COPPER ALLOY
- 3. SEE ITEM 5 & 6 IN PRINT 10064183 FOR PLATING SPEC OF 51772-012 AND 51772-012LF RESPECTIVELY.
- ④ MANUFACTURER'S NAME, P/N, AND DATE CODE TO APPEAR ON THIS SURFACE.
- 5. PRODUCT SPECIFICATION GS-12-149.
APPLICATION SPECIFICATION BUS-20-067.
- 6. PACKAGED IN TRAYS.

PCB NOTES:

- 7. ALL HOLE DIAMETERS ARE FINISHED HOLE SIZE.
- ⑧ MOUNTING HOLES, WHERE APPLICABLE, ARE UNPLATED.
- ⑨ $\varnothing 1.151 \pm 0.025$ DRILLED HOLES PLATED WITH
0.008 MIN SnPb OR Sn OVER 0.03
TO 0.08 Cu PLATING TO ACHIEVE
 $\varnothing 1.02 \pm .07$ HOLE.
- ⑩ "DIM XXX" TO BE DETERMINED BY THE CUSTOMER.
- ⑪ CONNECTOR KEEP-OUT ZONE.

mat'l code		SEE NOTE		tolerances unless otherwise specified		CUSTOMER		FCI		www.fciconnect.com	
ltr	ecn no.	dr	date	linear	0.X ± 0.3		COPY		projection	title	
A					0.XX ± 0.13		MIM			4P + 20S	
					0.XXX ± 0.051		← MIM →			R/A STB RECEPTACLE	
				angles	0° ± 2°		scale		product family		code
				dr	Warren Du	04/28/09	1:1		PwrBlade		213
				enrg	Warren Du	04/28/09	A		size		sheet
				chr	PM ZHENG	04/28/09			dwg no		4 of 4
				appd	JOSEPH HSIA	04/28/09			51772-012		
sheet index	revision sheet										

cage code 22526

Pro/E