

LPX 80

ENCLOSURE

Installation Notes

LPX80 • Cover Enclosure Kit

LPX80 will fit all the LPX8X power supplies

AMERICAS

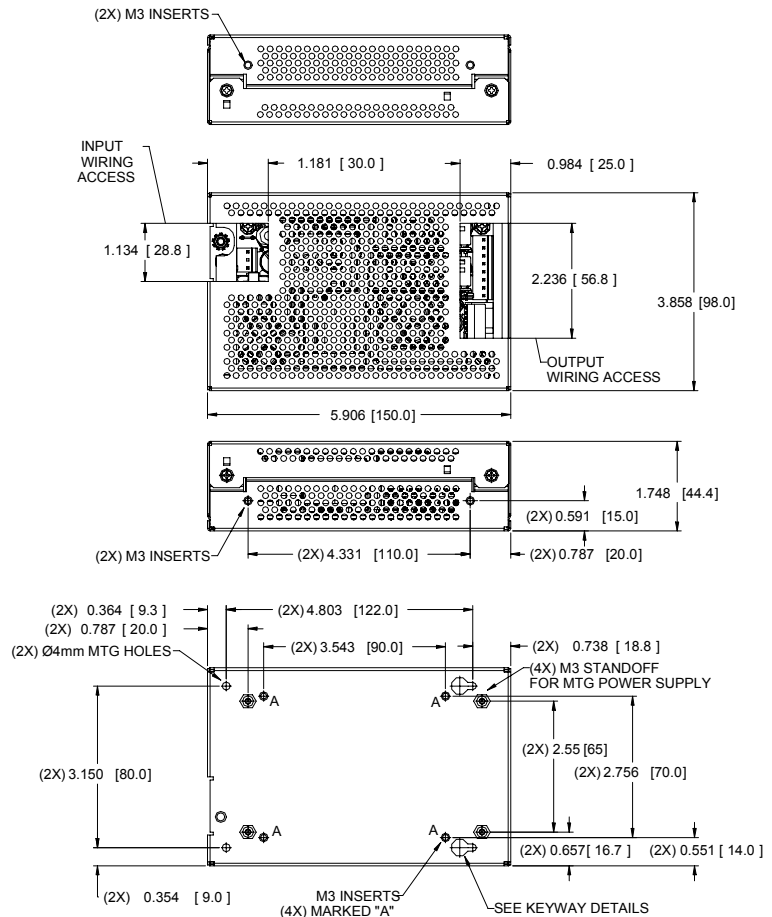
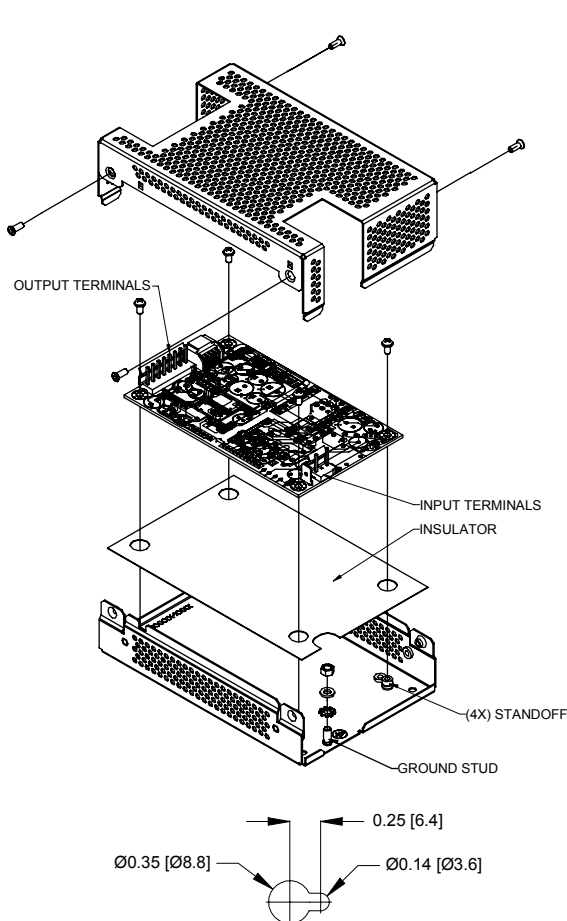
5810 Van Allen Way
Carlsbad, CA 92008
Telephone: 760-930-4600
Facsimile: 760-930-0698

EUROPE

Astec House, Waterfront Business Park
Merry Hill, Dudley
West Midlands, DY5 1LX, UK
Telephone: +44(0)1384-842211
Facsimile: +44(0)1384-843355

ASIA

Units 2111-2116, Level 21
Tower1, Metroplaza
223, Hing Fong Road
Kwai Fong, New Territories
Hong Kong
Telephone: 852-2437-9662
Facsimile: 852-2402-4426



MATERIALS

- 1 Base
- 1 Cover
- 4 M3 x 6mm pan head screws with spring washer
- 4 M3 x 6mm countersunk screws
- 1 M4 nut
- 1 M4 star washer
- 1 M4 spring washer
- 1 Plastic insulator sheet

NOTES

1. All dimensions are in inches (mm)
2. Overall dimensions:
5.9 (150) x 3.9 (98.0) x 1.75 (44.4)
3. Base plate has three sets of customer mountings:
a. Bottom mounting (4x) M3 inserts. Max. screw penetration 0.0787 (2mm)
b. Bottom mounting (2x) 4mm clear holes plus 2 keyways (see keyway detail)
c. Side mountings (4x) M3 inserts. Max. screw penetration 0.236 (6mm)
4. Ensure insulator is correctly fitted in base under PCB to maintain safety creepage and clearances.
5. Ensure base is firmly connected to supply earth via the earth stud marked Ⓧ.
6. When using this enclosure, ensure that relevant safety standards (e.g., EN60950) are complied with, in respect to creepage and clearance distances, and distances through insulation.